

ENVIRONMENTAL DESIGN 6B  
WINTER QUARTER 1978-79  
WEEKS 7-10  
SYNTHESIS PROJECT:  
FOOD FOR THOUGHT

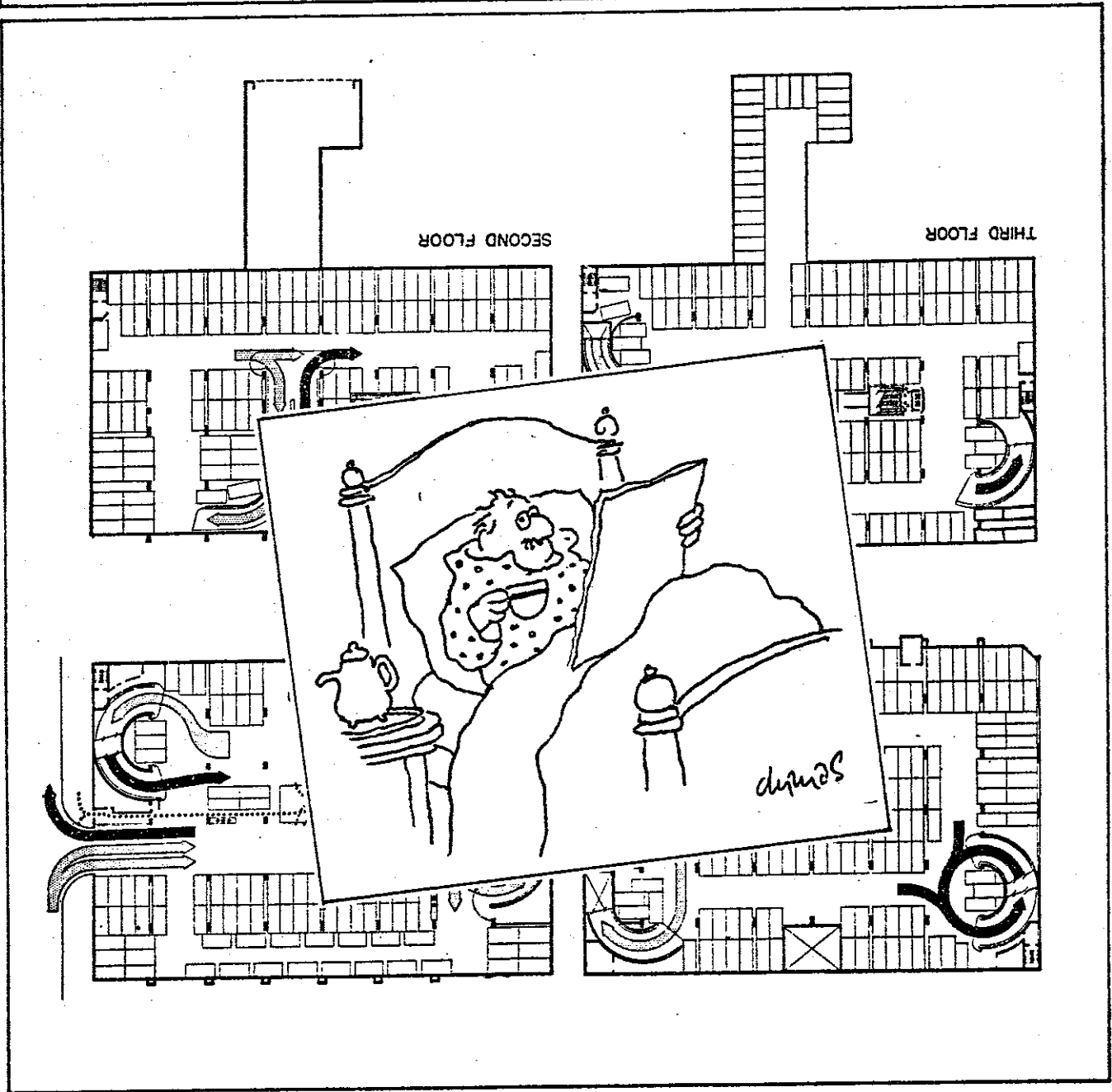
Architecture  
Univ. of Calif.-Berkeley  
Berkeley, CA 94720

Synthesis Project

WONG

Tony Dubovsky

# LOCAL EATS



A STORY: PLACE / CHARACTER / MEAL

Choose one of the three eating spots on the following sheets as your focus for an investigation of place. Spend some time on the site; how does it change during the day? Develop a story based on the particular nature of the place as you perceive it. Your story may be based on someone actually connected with the place; or it may be total fiction.

The story should involve the physical nature of the setting as a key element. ("They met at such and such table; it was a rainy afternoon; she had just stopped in for a cup of tea....") If possible, include elements which involve the actual history of the place. ("Years ago, when the Terminal Inn was no more than a....") Robin's Sandwiches, for example, has had a very lively past.

PRESENTATION

The main objective of the Synthesis Project is to present a particular place graphically in as full a sense as possible. To do this requires both close observation and imagination. For example, how do you convey place as you experience it? Which details are important? Can this be done in an elevation view? Is the quality of light important? The time of day (or night)? What about non-visual aspects: the temperament of the owner, the waitress, the clientele? Etc. etc. Your presentation should address such issues, as well as others which you consider important, vis a vis a story.

See the Winter '78 Project Description for a full discussion of the relationship between an experiential approach to place and the more conventional design drawing presentation. What does each approach contribute to our understanding? What does each leave out?

Your presentation should convey, first, a story about the place, including its history related to the lives of your characters. It should also convey the physical setting, using each of the design drawing systems we have treated in the ED 6 course. These should be employed where appropriate. For example, what kind of information is best conveyed in elevation? in plan? in an interior perspective? The physical setting should play an active role in the story you tell.

These two elements, the story and the physical setting should work together to give a clear picture of place as you experience it. Have fun! Be observant! Be inventive!

PROJECT GUIDELINES

1. Notebook. 8 $\frac{1}{2}$ " x 11". Record your observations; develop your characters and story. Notebook to be turned in as a supplement to the drawings, and as a record of your work. Each page should be dated.
2. Drawings. 22" x 30" format; sheets must be used horizontally, linking end to end. No exceptions! Your presentation should consist of a minimum of 3 sheets, printed by diazo. Each sheet should be clearly numbered to show sequence.

SCHEDULE

- Week 7. Project assigned. Spend time observing the place; develop notebook and story.
- Week 8. Measured drawings: orthographics; paraline; perspectives. Develop your own schedule in consultation with your TA. This is very important!
- Week 9 Putting all the parts together.
- Week 10. Drawing it up. Allow entire week for the final drawings at 22 x 30".

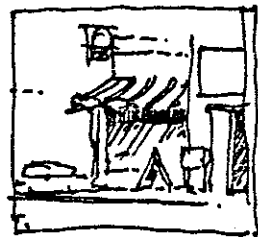
Project due on FRIDAY, MARCH 16, at 12:00 NOON. Turn in diazo prints at Room 103 Wurster (Tom Stone's Office). No late work accepted.

Review will be held on Friday, March 16, 2:00 to 5:00, in the main exhibition space on the first floor.

1

The PLACE :

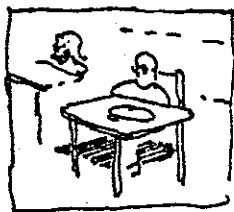
Terminal Inn :



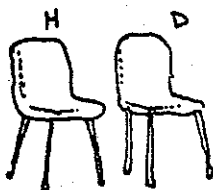
Snapshot



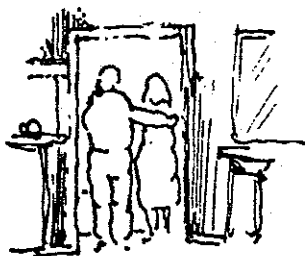
They met HERE  
(Table # 5)



Interior Perspective:  
Harvey at Breakfast  
before Doris.



After Doris: Their CHAIRS.

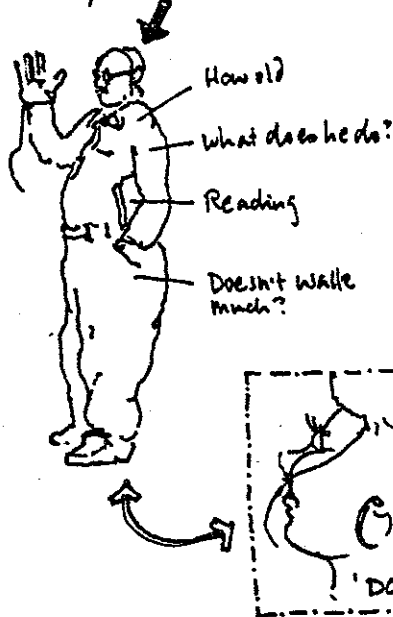


Harvey and Doris  
leaving the Terminal  
Inn.

2

The CHARACTER :

Harvey Ishmael :



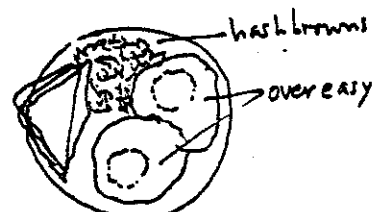
3

The Meal

Breakfast Special.



The breakfast THEY SHARED.



- HARVEY likes sunny side up
- Doris likes over easy

Subplot:

**A**

**HARVEY ISHMAEL**  
(Life Story)

Born: Chicago Ill. 1933  
U.S. Army in Korea  
Returned to Chicago.

etc.

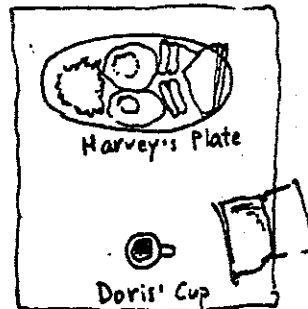
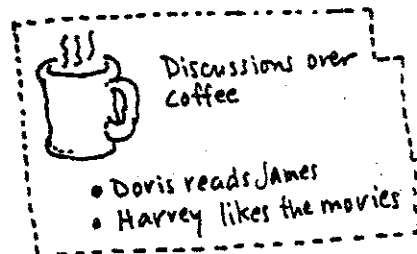
Presently works as  
furniture refinisher  
in North Oakland.  
Often eats breakfast  
at the Terminal Inn.  
(late Am).

**B**

**DORIS DELATORRE**  
(Life Story)

Born: Indianapolis 1941  
Moved to Detroit in late  
'40's.

Teller at Security Pacific.  
Coffee breaks at T. Inn.





Terminal Inn / 100 Berkeley Square / Berkeley, CA



Robin's Sandwiches / 2080 Grove Street / Berkeley, CA

Debusky ©



Fu Lu Shou Restaurant / Kittredge Sandwiches and Tempora  
2115-9 Kittredge Street / Berkeley

Dubrovsky ⑦