

School of Architecture and Planning

---

The Architecture Program  
1100 14th Street  
Campus Box 126  
Denver, Colorado 80202  
(303) 556-2877

### **Sectional Sequence Townhouse - Neiman**

This section of the studio proposed an alternative approach to the traditional method of architectural design as being a process of response to a specific, given program. In this case, a transformational methodology of formal responses to a hypothetical inclined, slot site with no party walls, was evolved into a program for a non-conventional hillside town home. Specific styles were not an issue. The initial compositions were to be fragmentary, abstracted, investigatory, and exude a sense of the reference material chosen. Among the formal ideas to be kept in mind while composing were: connections, combinations, scaling, defining corners, alignments, thematic variation, dense center vs. dense edge, etc.. The focus was on formal configurations and combinations, and the possibilities inherent within the exemplary planimetric fragments discovered.

#### **Transformational Phases:**

- Part I: de-compositional analysis of six exemplary houses
- Part II: two interpretive analytical compositions
- Part III: seven interpretive site compositions
- Part IV: longitudinal sectional idea
- Part V: site form idea (model)
- Part VI: final model, plans, section

#### **Final Presentation Requirements:**

three plans  
one longitudinal section  
synopsis board showing studies from parts I through IV  
model

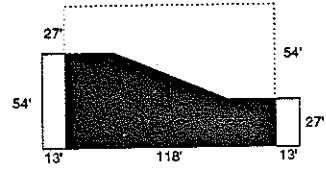
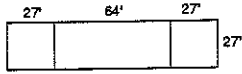


Bennett Neiman  
Assistant Professor

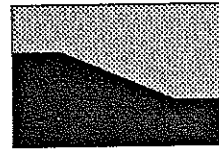
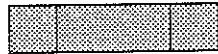
# Sectional Sequence Townhouse Project

Seven Interpretive Site Options

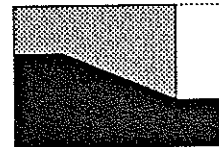
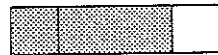
Normative site condition



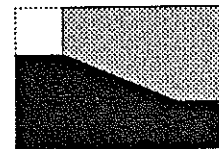
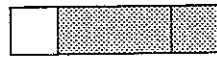
1



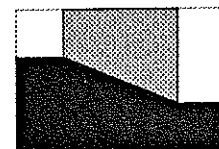
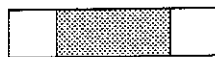
2



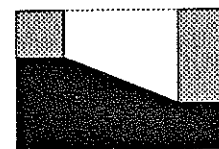
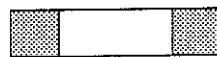
3



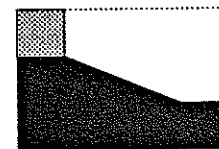
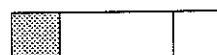
4



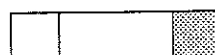
5

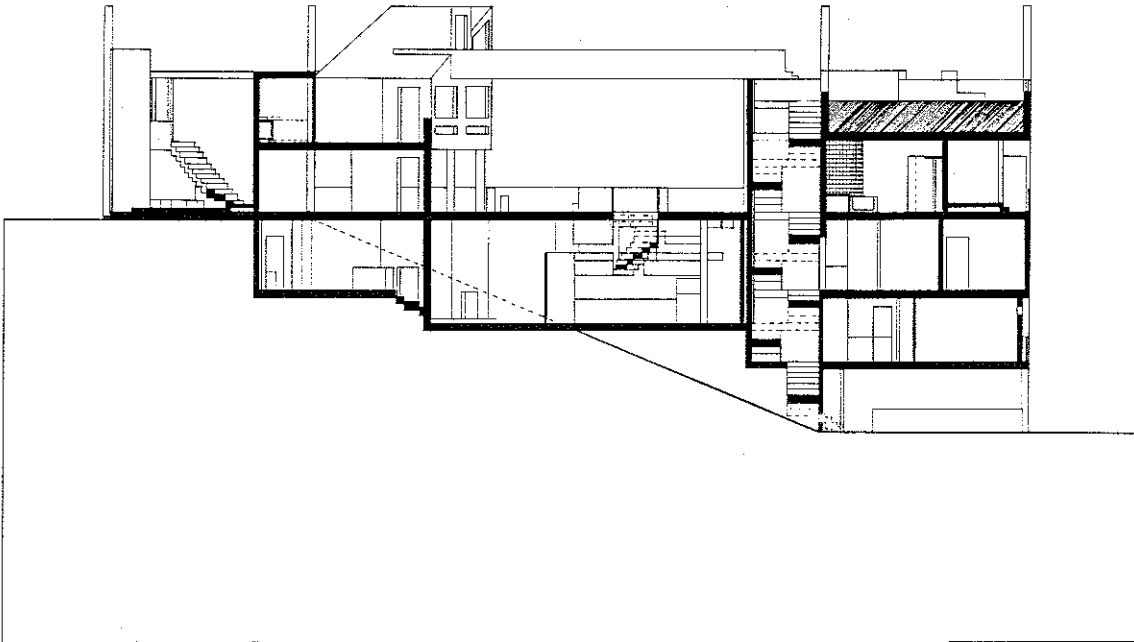
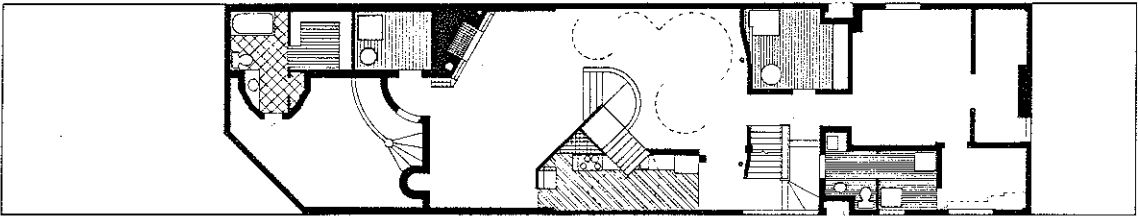
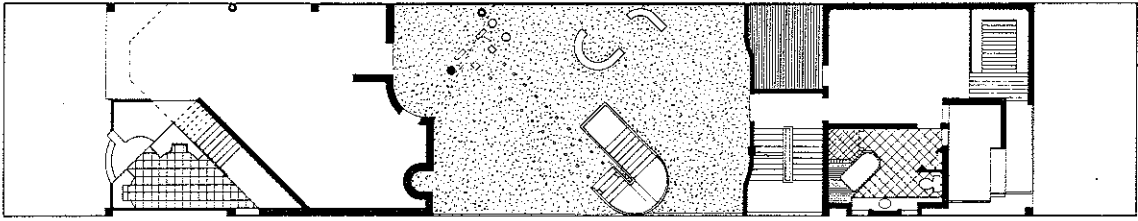
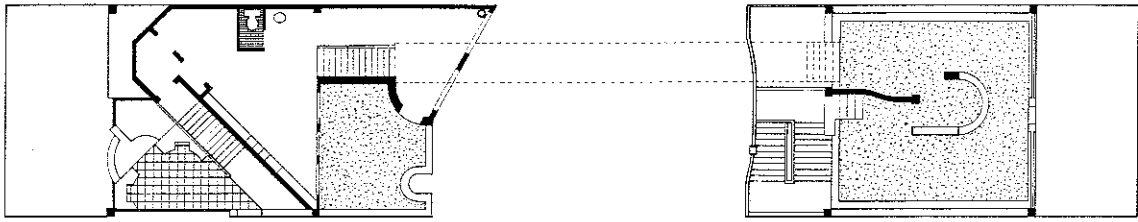


6

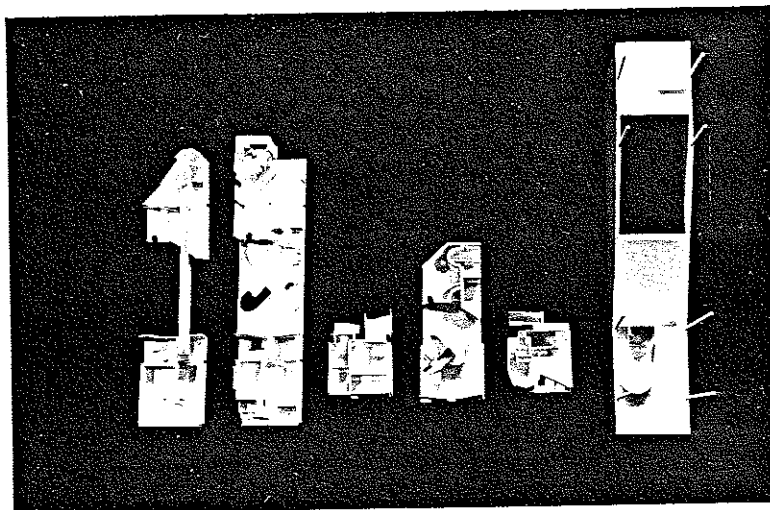
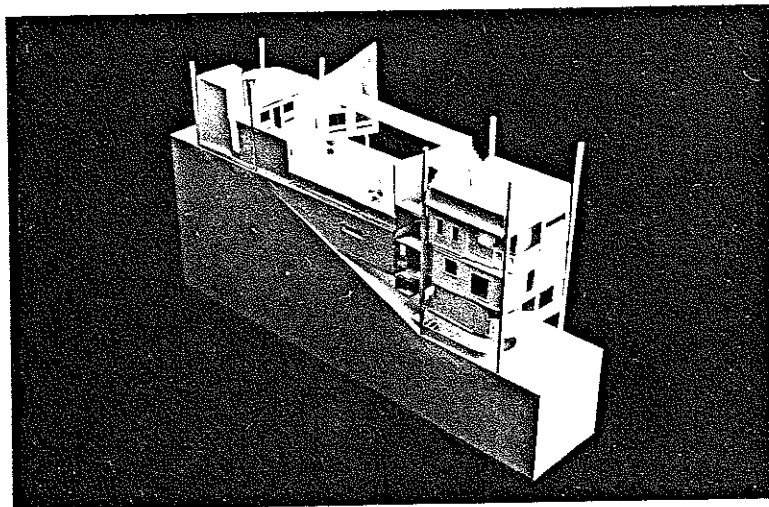
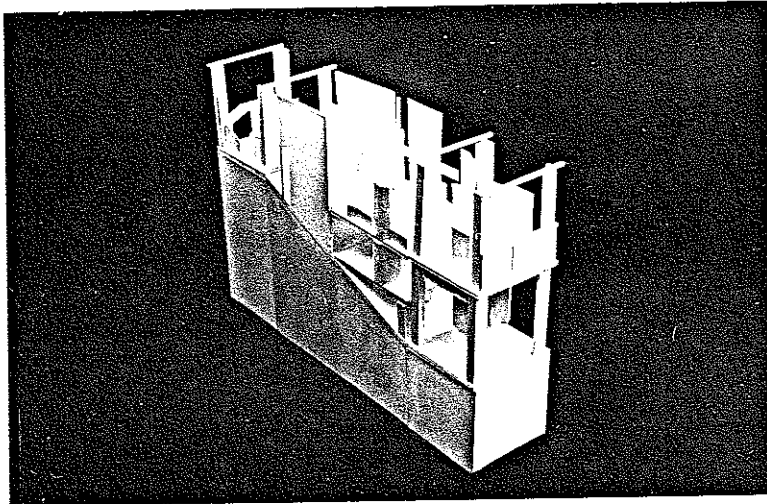


7

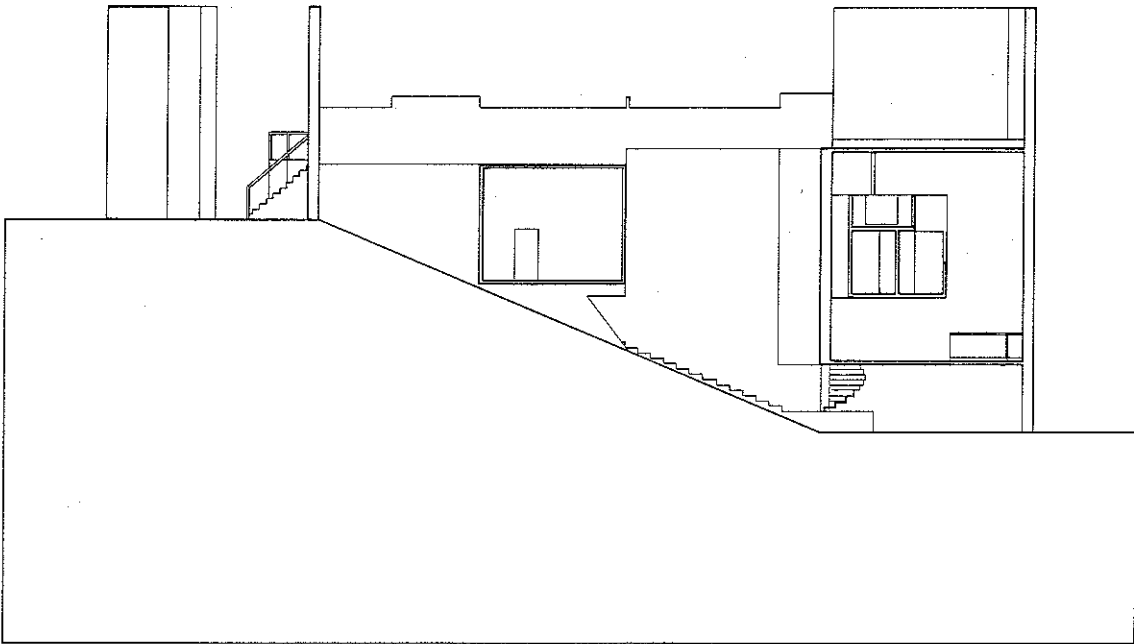
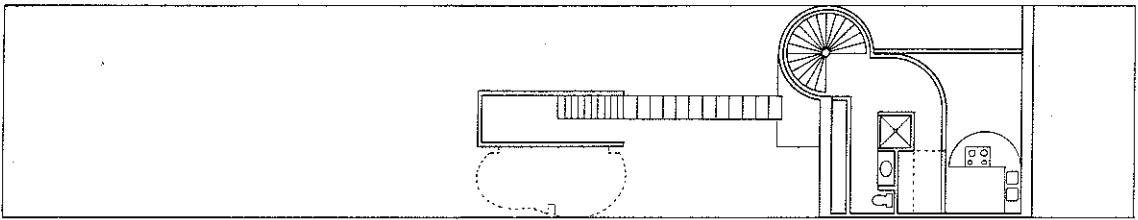
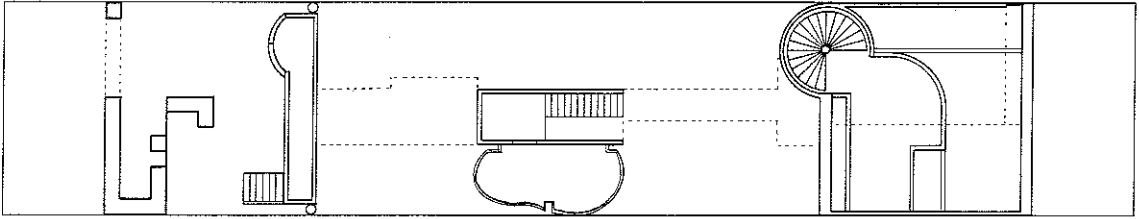
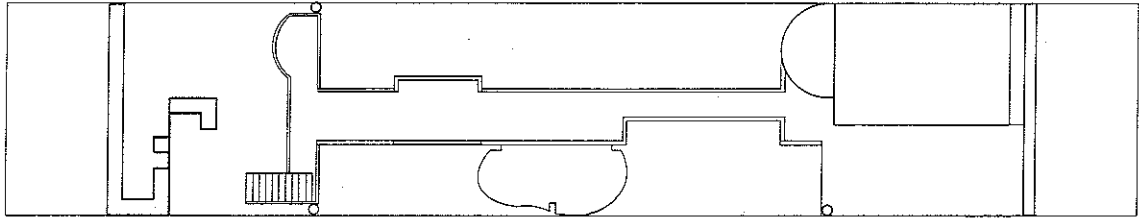




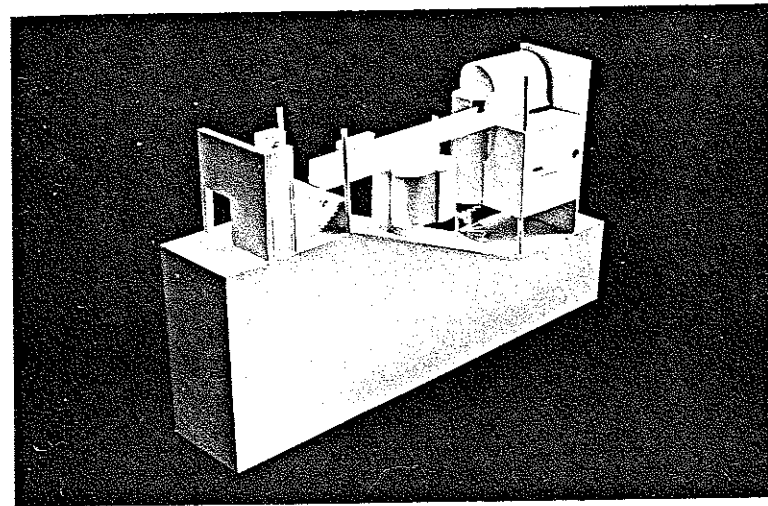
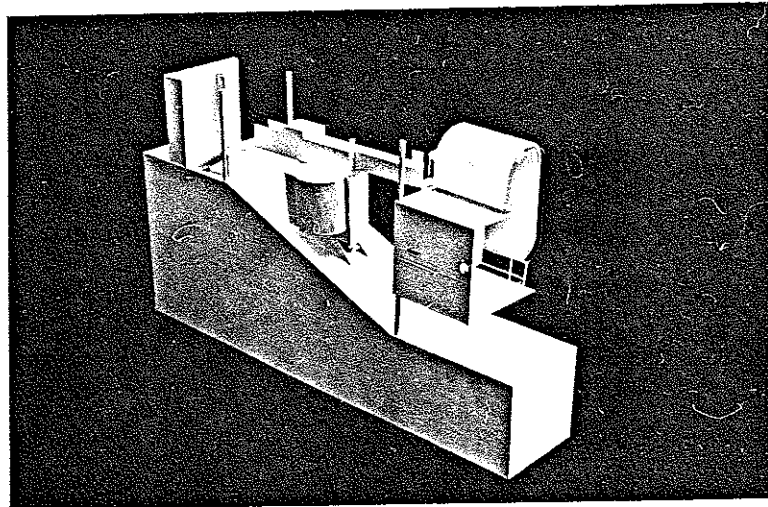
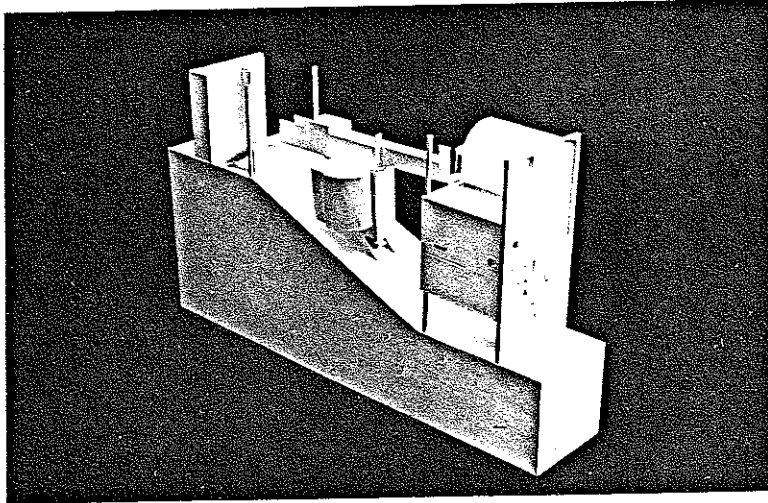
Roger Youel



Roger Youel



Terry Kemp



Terry Kemp