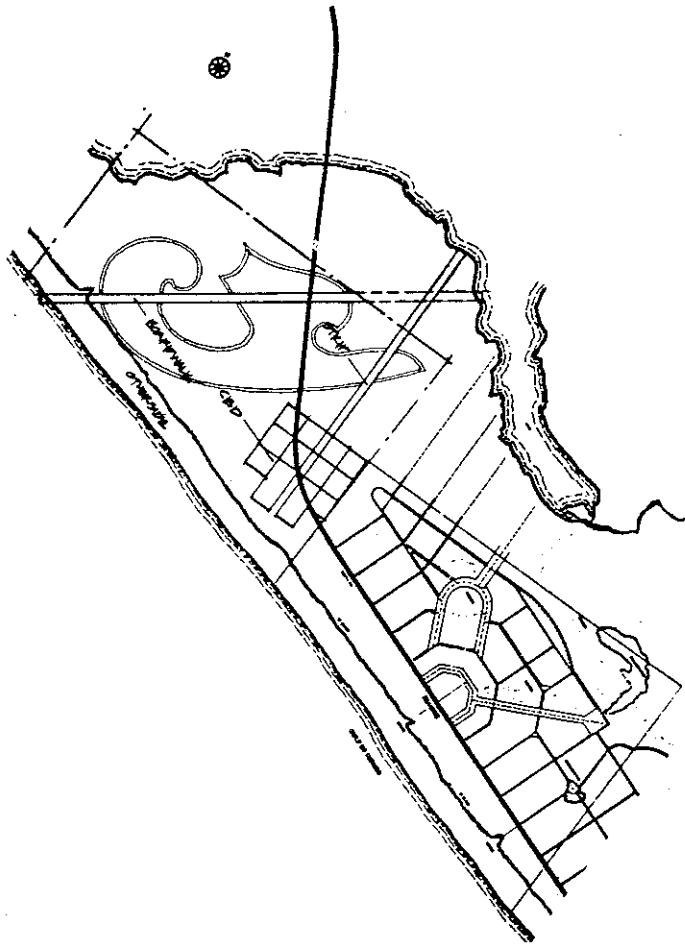
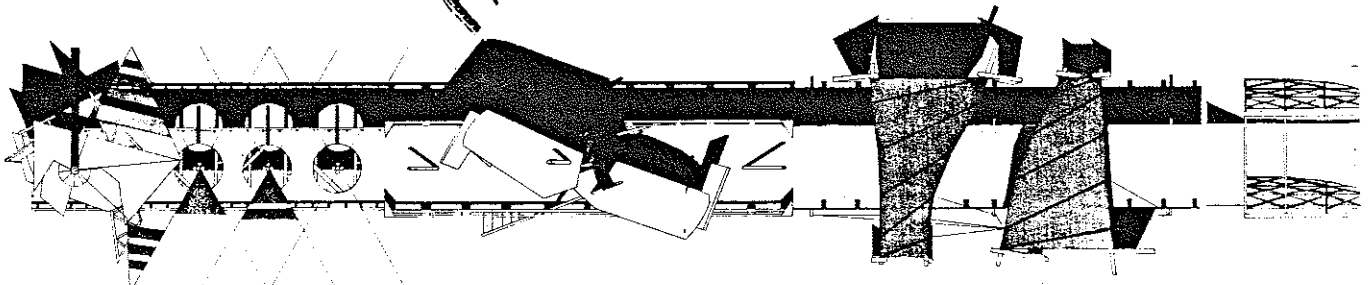


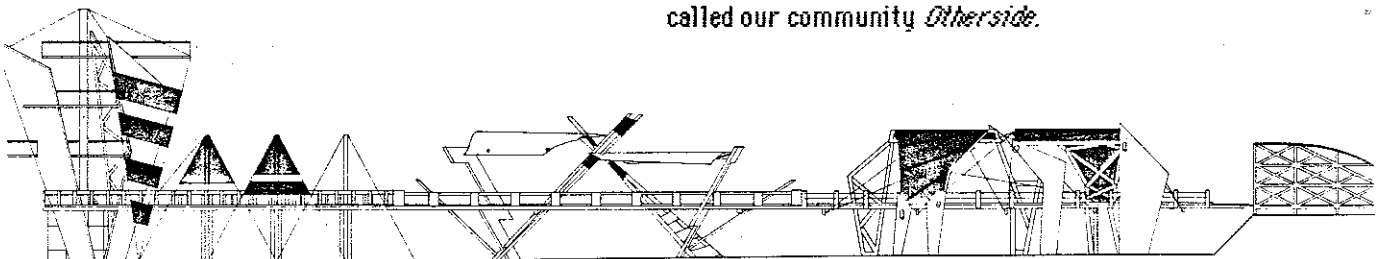
University of Tennessee / Knoxville
 First-year design studio (9 weeks)
 Instructors: Judith Reno / Michael Kaplan



The design studio was organized to support the student's development of a personal language through three-dimensional manipulation of nonconventional elements: plastic scale-model kits of autos, airplanes, boats, and rocketships. We were charged to address *structure, space, and enclosure* within the students' first architectural design studio. We defined *structure* initially in a general sense: the arrangement of parts in a definite pattern of organization which was to be manipulated by collage, linkage, and fusion. Architecture, as art and construction, synthesizes thought unique to the individual with objects of conventional usage. The design process represents a transformation or evolution of spatial consciousness, one which records that interplay existing at a point in time.

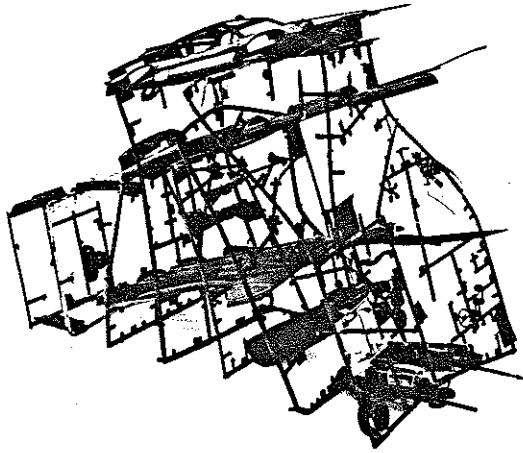


As a matrix for this process, we elected to create a community hypothetically located adjacent to Seaside, Florida. It also occupies 80 acres and is developed at the same density. The community's major built elements include: CBD, commercial strip, boardwalk, and housing. We contrast our community to *Seaside* in its support of individual expression by breaking codes and inventing language. We called our community *Otherside*.

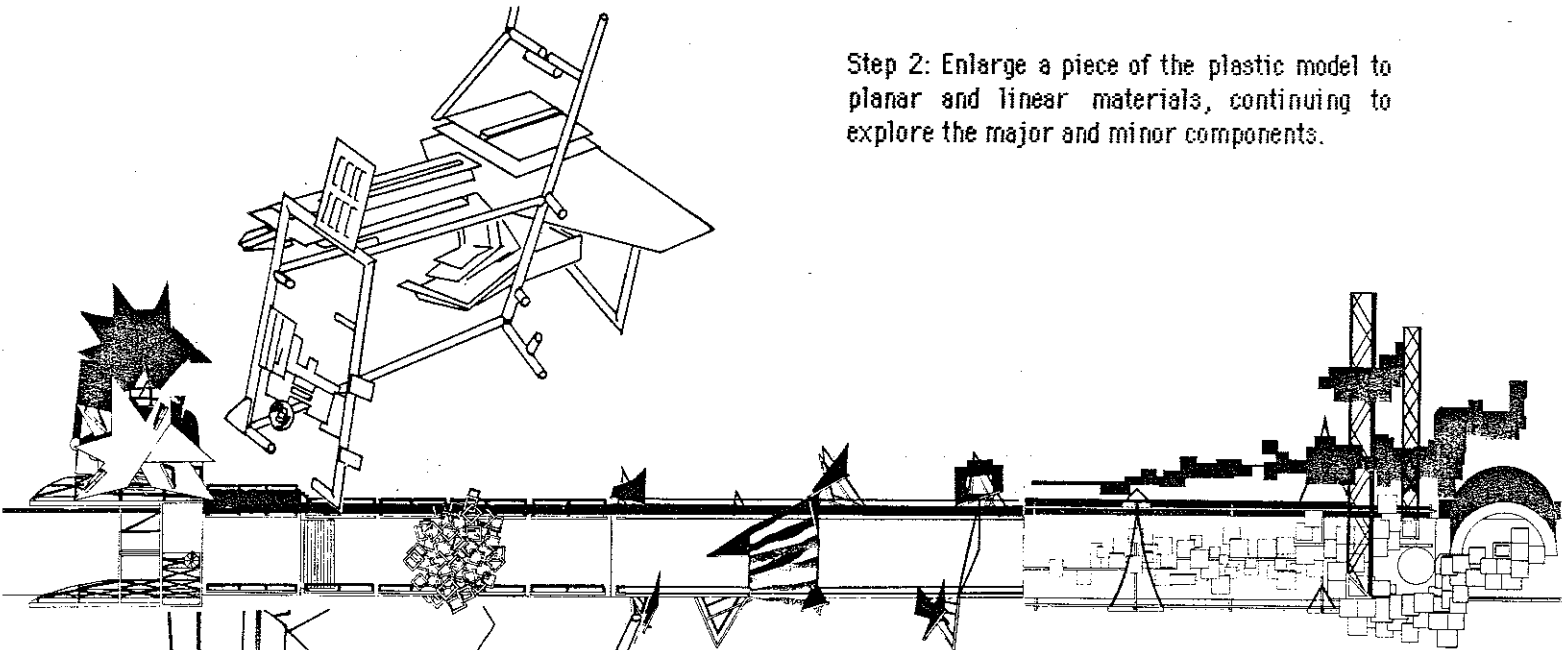


The following steps represent the ordering of an expression of self into house:

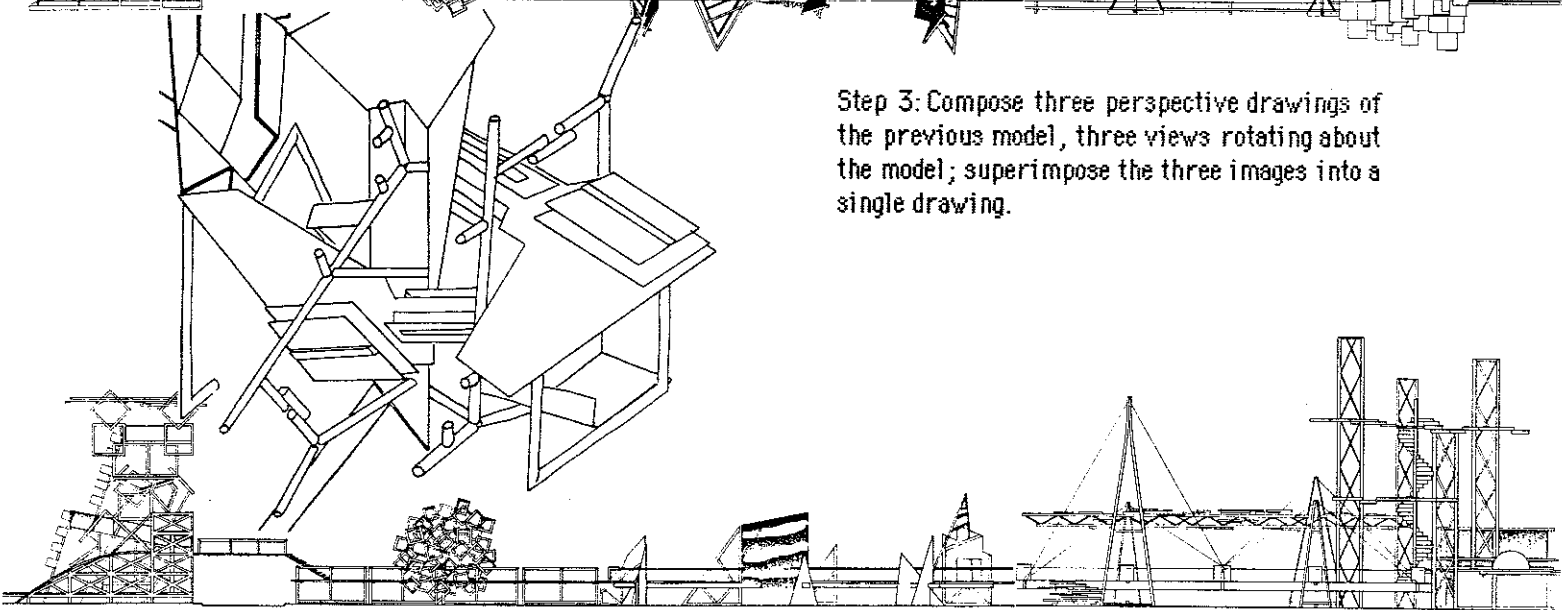
Step 1: Combine two plastic scale model kits and rearrange their elements to find a new composition or structure, denoting major and minor elements.

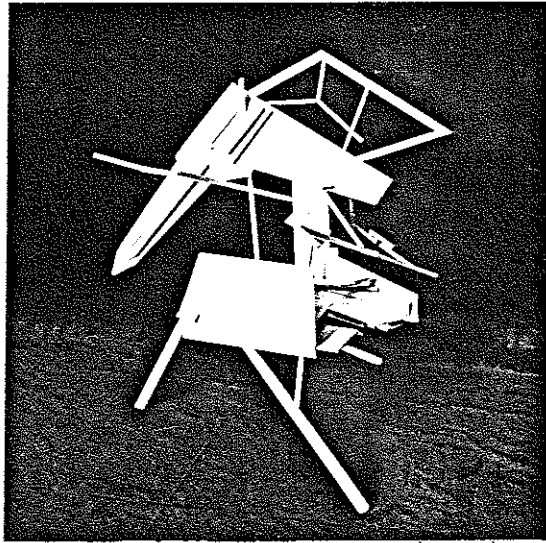


Step 2: Enlarge a piece of the plastic model to planar and linear materials, continuing to explore the major and minor components.

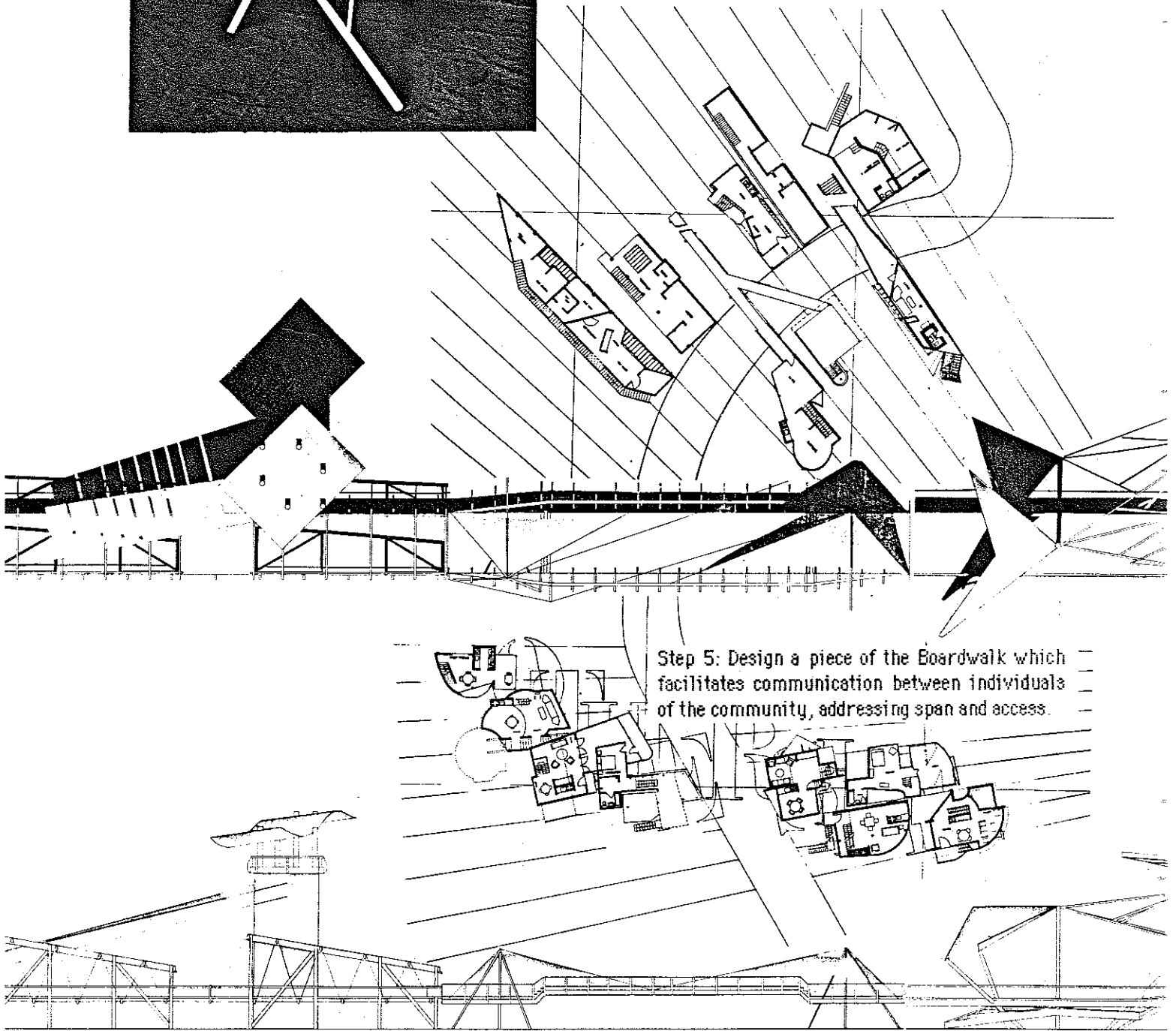


Step 3: Compose three perspective drawings of the previous model, three views rotating about the model; superimpose the three images into a single drawing.

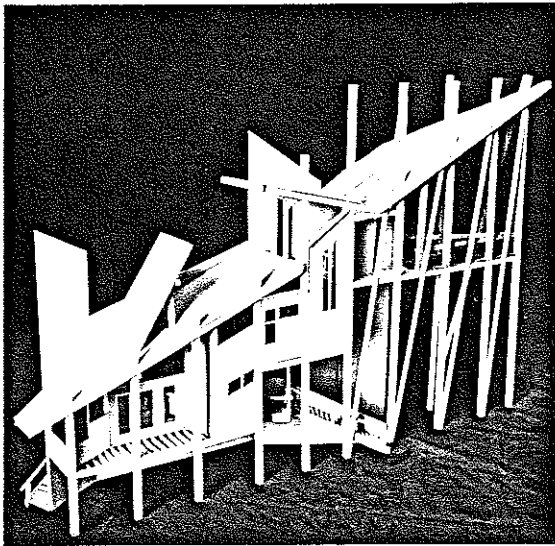




Step 4: Translate this drawing into a three-dimensional model of balsa wood.



Step 5: Design a piece of the Boardwalk which facilitates communication between individuals of the community, addressing span and access.



Step 6: Design a house which provides for eating, sleeping, living, working, and bathing. Its enclosure will provide natural light, ventilation and view to the Boardwalk, lake, and ocean. One-third of the house is required to include a cabana or screened porch.

